

An aerial photograph of a city, likely York, showing a mix of historic and modern architecture. A river flows through the left side of the image. In the background, a large cathedral with multiple spires is visible. The foreground features a large, multi-story brick building with many windows, which is the subject of the listing.

Ashtons

31 Cocoa Suites Navigation Road YO1 9AE

£1,650

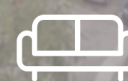
2



2



1



E

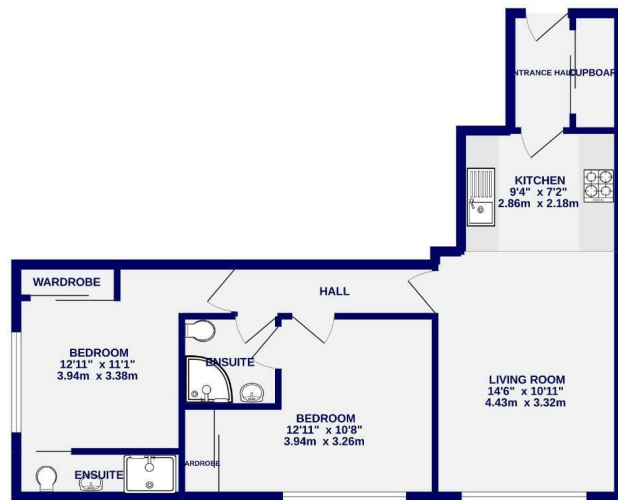




This superb two bedroom apartment has views over the River Foss and is located in the Historic Grade II listed Rowntree Wharf, just a short walk from York City Centre. The property is offered on a furnished basis and briefly comprises of entrance hall with storage cupboard housing a washing machine; an open plan kitchen, living room and dining area with kitchen equipped with oven, hob, fridge freezer & dishwasher; two double bedrooms with built in wardrobes and each benefiting from a well-appointed shower room with spacious walk in shower. The property also has a secure allocated parking space.

Available 24th May / EPC Rating E / Deposit: £1750 / Flexible Tenancy Lengths (6, 9, 12 months available) / Council Tax Band: D

GROUND FLOOR  
611 sq.ft. (56.8 sq.m.) approx.



TOTAL FLOOR AREA: 611 sq.ft. (56.8 sq.m.) approx.  
While every attempt has been made to ensure the accuracy of the floorplan contained here, measurements of floors, walls, rooms and other areas are approximate and not responsible to them for any error or omission in the materials. This plan is for guidance only and should not be used as a basis for any prospective purchase. The services, systems and appliances shown here are not listed and for guidance only in their operation or effectiveness can be given.  
Made with Metronix 02/22



Ashtons Lettings

01904 731404

lettings@ashtonsnet.com